

# str8 LED™ spec sheet

**material**  
 ribbed extruded aluminum outer housing in two lengths available in 2 anodized and 13 standard powder coat paint finishes listed below.

**LED**  
 COB in 2700K, 3000K, 3500K, or 4000K (80 cri standard) (90 cri optional) rated >36,000 hours L70 (6.8K) per LM-80 test data, and 71,000 hours projected life per IES TM-21.

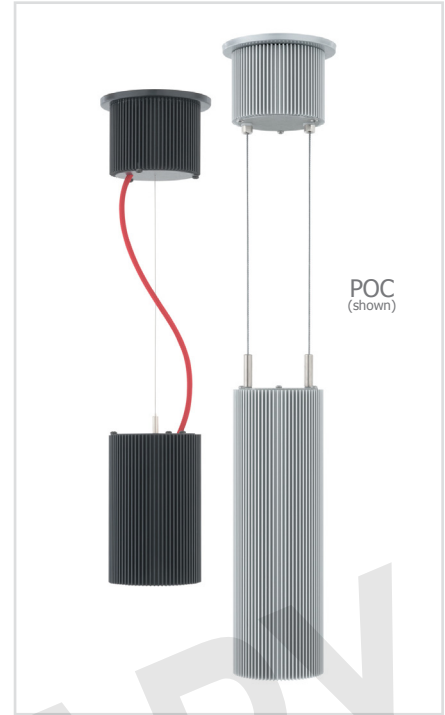
**driver**  
 in canopy, constant current, class P class 2 power unit, class A sound rating, universal input (120-277V) programmable driver, 1% minimum dimming level, PF >0.90. protections include short circuit, input/output isolation and surge protection (3KV). wired for 0-10v dimming from factory.

**mounting**  
 extruded aluminum canopy painted to match fixture. ultrathin vertical stainless steel cable and field adjustable gripper that allow for exact AFF mounting heights. cloth-covered power cord color options listed below. cord requires special stripping tool (link).

**power over cable (optional)**  
 Class 2 LED powered suspension system that suspends and powers the fixture with thin stainless steel copper-core conductive cables, providing a clean look without the need for a separate power cord. powered suspension requires cable cutter (link) specifically designed to cut stainless steel aircraft cable from 1/32" to 1/8".

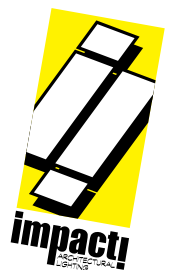
**finish**  
 select from 2 anodized and 13 standard powder coat paint finishes listed below or specify RAL# for custom colors.

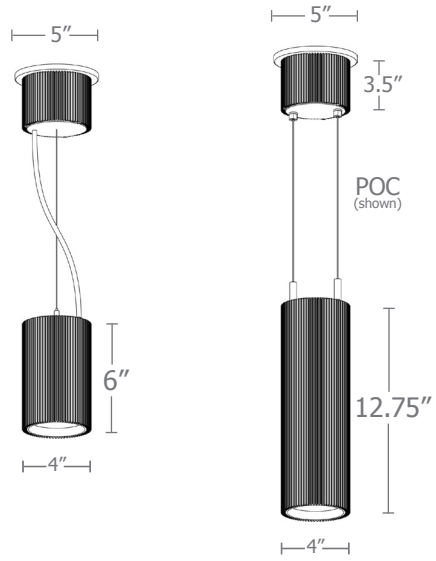
**emergency**  
 if required, recommend use of inverter (by other).



## catalog number

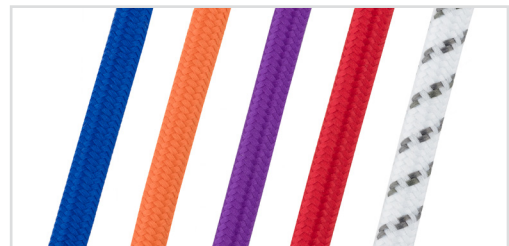
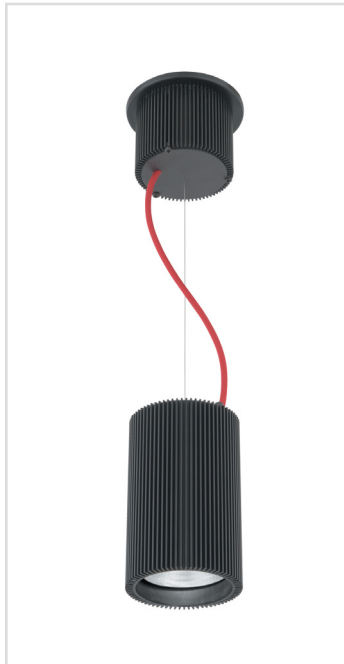
size	beam	CCT	lumens*	anodized finishes	power cord	options
<b>P7506</b> 4"dia X 6"ht	<b>S</b> 20° spot <b>M</b> 30° med <b>W</b> 50° wide	<b>27</b> 2700K <b>30</b> 3000K	<b>L1</b> 450 lm <b>L2</b> 800 lm	<b>AN</b> silver anodized <b>ANB</b> anodized black	<b>BUPC</b> blue cloth cord <b>ORPC</b> orange cloth cord <b>PLPC</b> purple cloth cord <b>RDPC</b> red cloth cord <b>WGPC</b> white & gray dot cloth cord	<b>3FT</b> 36" cables <b>6FT</b> 72" cables <b>90CRI</b>
<b>P7512</b> 4"dia X 12.75"ht		<b>35</b> 3500K <b>40</b> 4000K	<b>L3</b> 1000 lm <b>H4</b> 1500 lm <b>H5</b> 2200 lm <b>H6</b> 3000 lm <small>*preliminary</small>	<b>BR</b> brick red <b>BU</b> blue <b>BZ</b> bronze <b>CP</b> champagne <b>MB</b> military blue <b>MN</b> mint <b>MW</b> matte white <b>OR</b> orange <b>RD</b> red <b>SS</b> satin silver <b>TG</b> textured gray <b>TW</b> textured white <b>YO</b> yellow  <b>premium finish</b> <b>RAL</b> specify RAL#	<b>POC</b> power over cable	



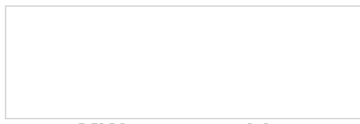


Cat No	lumens*	watts
L1	450	4
L2	800	7
L3	1000	10
H4	1500	14
H5	2200	20
H6	3000	29

\*Preliminary delivered lumens



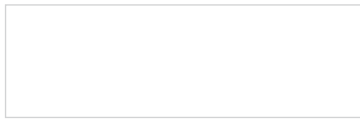
## Powder Coat Paint Finishes



**MW** matte white



**YO** yellow 1018



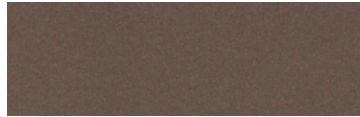
**TW** textured white



**CP** champagne



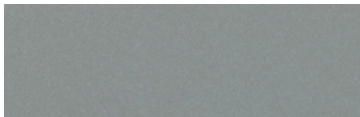
**RD** red 3020



**BZ** bronze



**BU** blue 5017



**SS** satin silver



**BR** brick red



**OR** orange 2011



**TG** textured gray



**MB** military blue



**MN** mint 6019

For accurate color verification, actual finish samples are available upon request.

## Premium Finishes\*



**RAL#**

For accurate color verification, actual finish samples are available upon request.

\*Available on select series. Consult product spec sheet for availability.

