

job name:
 type:

i.drop™ fluorescent spec sheet

material

ballast housing

spun .063" aluminum trumpet.

optics

diffuser

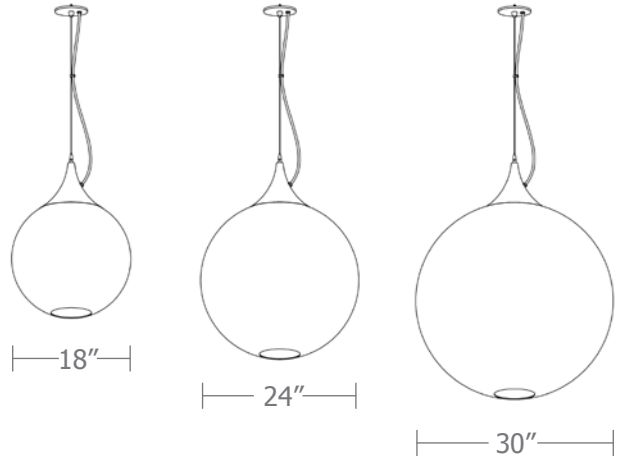
.125" gloss white virgin acrylic. reinforced top opening on 24" and 30".

electrical

pre-wired for single circuit with factory installed universal voltage (120-277v), thermally protected, class P, electronic ballast. white power cord is standard with other color options listed below.

mounting

5"dia. spun steel canopy in satin white with single 12ft stainless steel cables and field adjustable grippers that allow for exact AFF mounting heights.



catalog number

--	--	--	--

size

- P5318** 18"dia X 24"ht
- P5324** 24"dia X 30"ht
- P5330** 30"dia X 36"ht

lamping

- (18")
- 126** 1-26W CFTR
(labeled max.)
- 132** 1-32W CFTR
(labeled max.)
- 142** 1-42W CFTR
(interchangeable 26/32/42W)
(ies file #16501)
- (24")
- 126** 1-26W CFTR
(labeled max.)
- 132** 1-32W CFTR
(labeled max.)
- 142** 1-42W CFTR
(interchangeable 26/32/42W)
- (30")
- 126** 1-26W CFTR
(labeled max.)
- 132** 1-32W CFTR
(labeled max.)
- 142** 1-42W CFTR
(interchangeable 26/32/42W)

finish

- AP** anodized paint
- BR** brick red
- BU** blue
- BZ** bronze
- CP** champagne
- MB** military blue
- MN** mint
- MW** matte white
- OR** orange
- RD** red
- SB** satin black
- SS** satin silver
- TG** textured gray
- TW** textured white
- YO** yellow

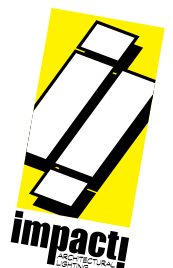
- BKPC**
- SBPC**

options

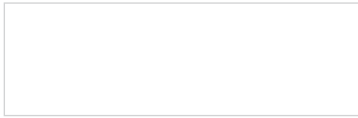
- BKPC** Black power cord and canopy
- SBPC** Silver braid power cord and white canopy

Premium Finish

- BA** brushed aluminum
- RAL** specify RAL#



Powder Coat Paint Finishes



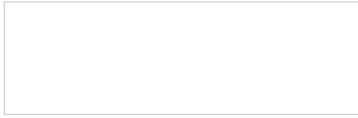
MW matte white



SB satin black



YO yellow 1018



TW textured white



CP champagne



RD red 3020



AP anodized paint



BZ bronze



BU blue 5017



SS satin silver



BR brick red



OR orange 2011



TG textured gray



MB military blue



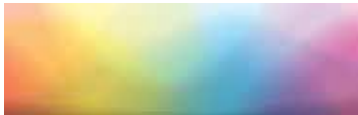
MN mint 6019

For accurate color verification, actual finish samples are available upon request.

Premium Finishes*



BA brushed aluminum



RAL#

For accurate color verification, actual finish samples are available upon request.

*Available on select series. Consult product spec sheet for availability.

